

Wattneed Inverter Setup SOP - Pylon Battery

To take advantage of your Pylontech battery warranty please pay attention to the settings below on WKS inverters for off-grid solutions (Off-Grid) or Multisolar inverters for grid-based solutions (On-Grid).

Be sure to follow the safety precautions. You will find them at the end of the document.

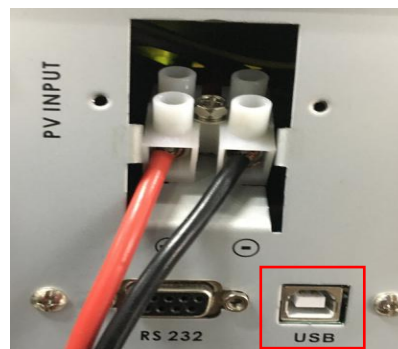
1. Multisolar - On-grid Solution

(1) General Compatible Condition:

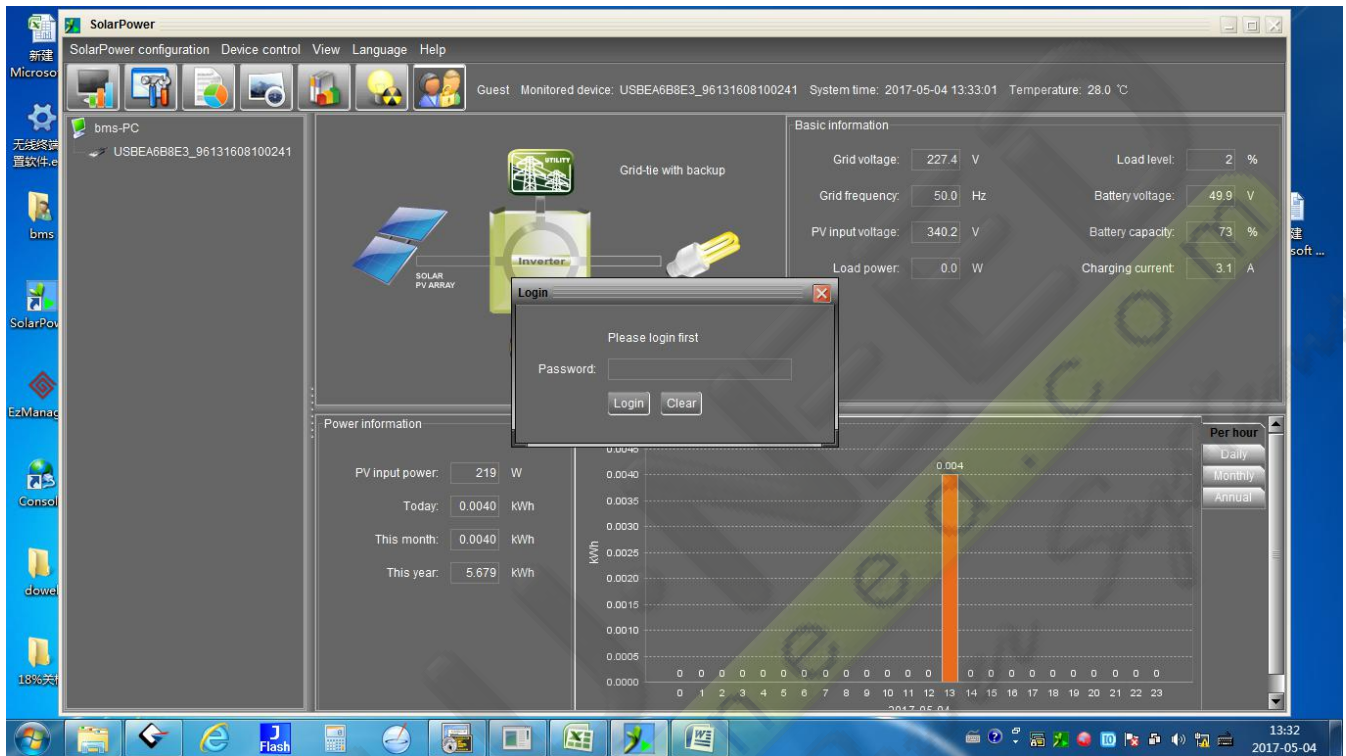
Battery Type	US2000B/Phantom-S			
Inverter Type	Multisolar 2kW	Multisolar Plus 3kW	Multisolar Plus 5kW	Multisolar 3P 10kW
Recommend battery Amount	According to load requirement and inverter rated power. Battery Amount N = Load power/1200W			
Communication	Not required, but need finish the setting on Inverter software			
DOD	80%			
Working Temp.	0 - 50°C (Indoor operation)			
Charge/Discharge Current	N*25, N = Battery amount			
Warranty	5yrs			

(3) Inverter set up:

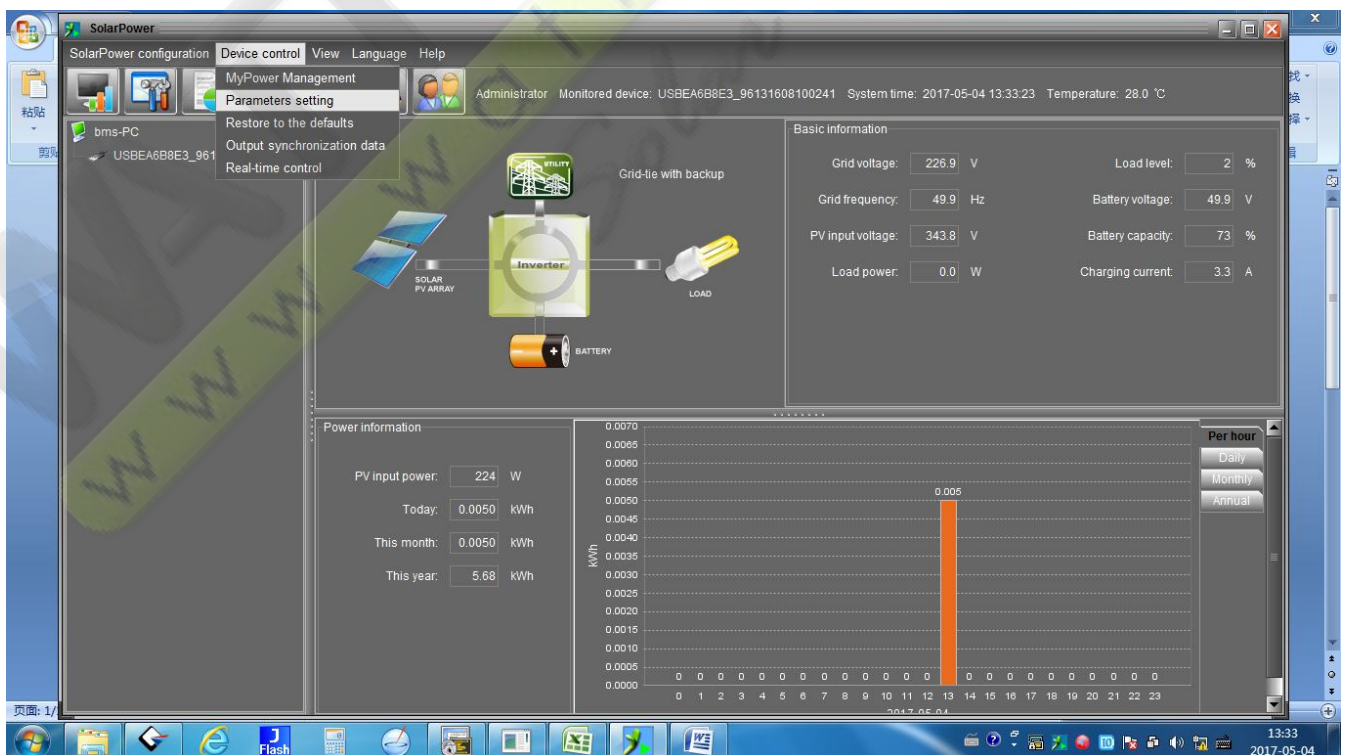
(a) Connect PV or Grid power to wake up inverter; Connect the communication cable from Inverter to computer.



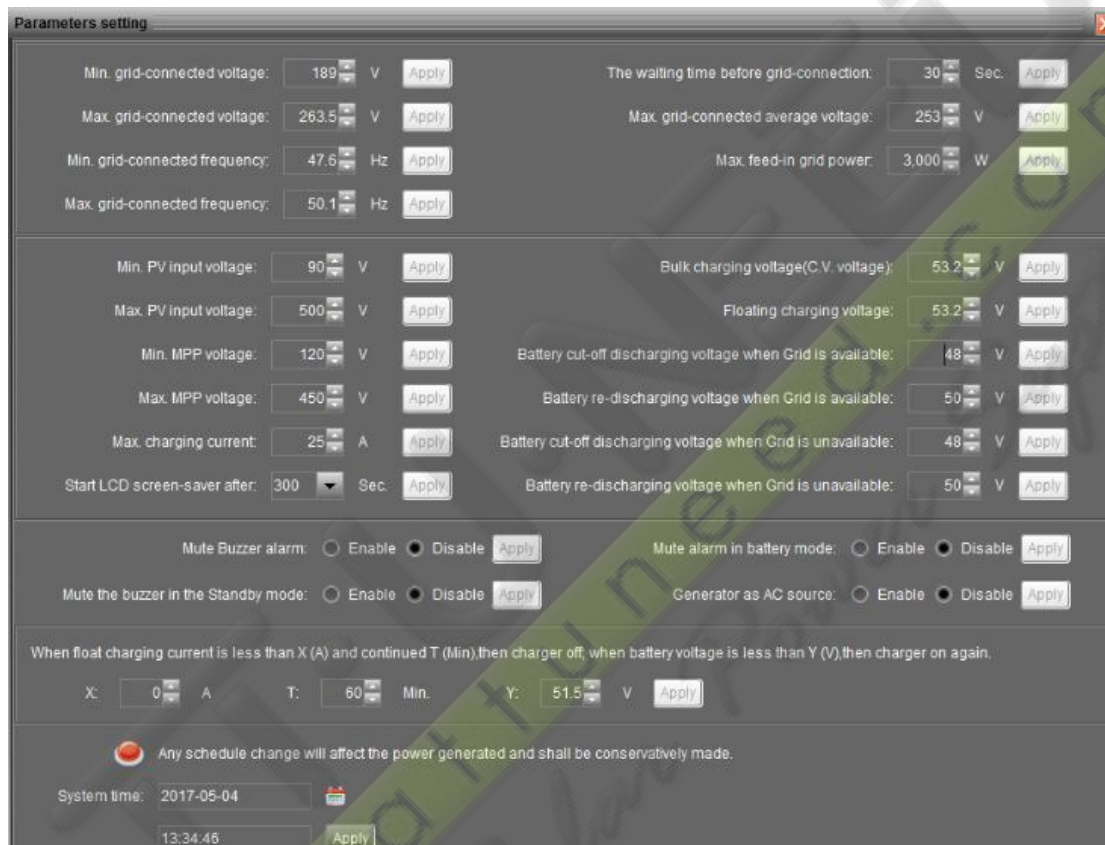
(b) Open 'Solarpower.exe'(the inverter set up software), Log in .



(c) Press 'Parameters Setting'.



(d) Set the parameter according to below recommendation, the max. charge current refer to the specific battery amount of real application. Then click 'Apply'. According to the inverter limitation, for 2kW&3kW inverter max. is 25A, for 5kW max. is 100A, for 10kW max. is 200A.



2. WKS - Off-grid Solution

(1) General Compatible Condition:

Battery Type	US2000B/Phantom-S			
Inverter Type	WKS 1K-48	WKS 3K-48	WKS 4K	WKS 5K
Max. charge current	33A	33A	140A	140A
Recommend battery Amount	According to load requirement and inverter rated power. Battery Amount N = Load power/1200W			
Communication	Not required, but need finish the setting on Inverter.			
DOD	80%			
Working Temp.	0 - 50°C (Indoor operation)			
Charge/Discharge Current	N*25, N = Battery amount			
Warranty	5yrs			

(3) Inverter set up:

(a) Connect Inverter with battery, wake up inverter.



(b) Press 'Enter' for 5s, to enter into the setting.



(c) Press 'Up' and 'Down' to choose the setting item No., press 'Enter' to enter into the detailed setting parameter, when finish press 'Enter' again. The following setting items need to be set follow the recommended value:

Item No.	Setting Value
Program 02	Set to N*25A, N=battery amount
Program 05	Set to USE
Program 12	Set to 48V
Program 13	Set to 51V
Program 26	Set to 53.2V
Program 27	Set to 53V
Program 29	Set to 47.5V



Note: WKS Inverter can only be waked up via battery, if the battery is turned off due to over-discharge, over temp. or other reasons, in order to wake up the inverter you need turn on the battery manually.

Any further questions to this SOP please contact us via service@pylontech.com.cn

Before Connecting



Warning

- 1) After unpacking, please check product and packing list first, if product is damaged or lack of parts, please contact with the local retailer;
- 2) Before installation, be sure to cut off the grid power and make sure the battery is in the turned-off mode;
- 3) Wiring must be correct, do not mistake the positive and negative cables, and ensure no short circuit with the external device;
- 4) It is prohibited to connect the battery and AC power directly;
- 5) The embedded BMS in the battery is designed for 48VDC, please DO NOT connect battery in series;
- 16BISV0903 04
- 6) Battery system must be well grounded and the resistance must be less than 1Ω;
- 7) Please ensured the electrical parameters of battery system are compatible to related equipment;
- 8) Keep the battery away from water and fire.

In Using



Warning

If the battery system needs to be moved or repaired, the power must be cut off and the battery is completely shutdown;

2) It is prohibited to connect the battery with different type of battery.

3) It is prohibited to put the batteries working with faulty or incompatible inverter;

4) It is prohibited to disassemble the battery (QC tab removed or damaged);

5) In case of fire, only dry powder fire extinguisher can be used, liquid fire extinguishers are prohibited;

6) Please do not open, repair or disassemble the battery except staffs from Pylontech or authorized by Pylontech. We do not undertake any consequences or related responsibility which because of violation of safety operation or violating of design, production and equipment safety standards.

Safety Precautions

These installation instructions require specific background electricity knowledge. Pylon assumes no liability for injury or property damage due to repairs or maintenance attempted by unqualified individuals or a failure to properly follow these instructions without Pylon authorization.



Reminding

It is very important and necessary to read the user manual carefully (in the accessories)

before installing or using battery. Failure to do so or to follow any of the instructions or

warnings in this document can result in electrical shock, serious injury, or death, or can

damage battery, potentially rendering it inoperable.

2) If the battery is stored for long time , it is required to charge them every six months, and

the SOC should be no less than 80%;

3) Battery needs to be recharged within 12 hours, after fully discharged;

4) Do not expose cable outside;

5) All the battery terminals must be disconnected for maintenance;

6) Please contact the supplier within 24 hours if there is something abnormal.

7) Do not use cleaning solvents to clean battery;

8) Do not expose battery to flammable or harsh chemicals or vapors;

9) Do not paint any part of battery, include any internal or external components;

10) Do not connect battery with PV solar wiring directly;

11) The warranty claims are excluded for direct or indirect damage due to items above.

12) Any foreign object is prohibited to insert into any part of battery.